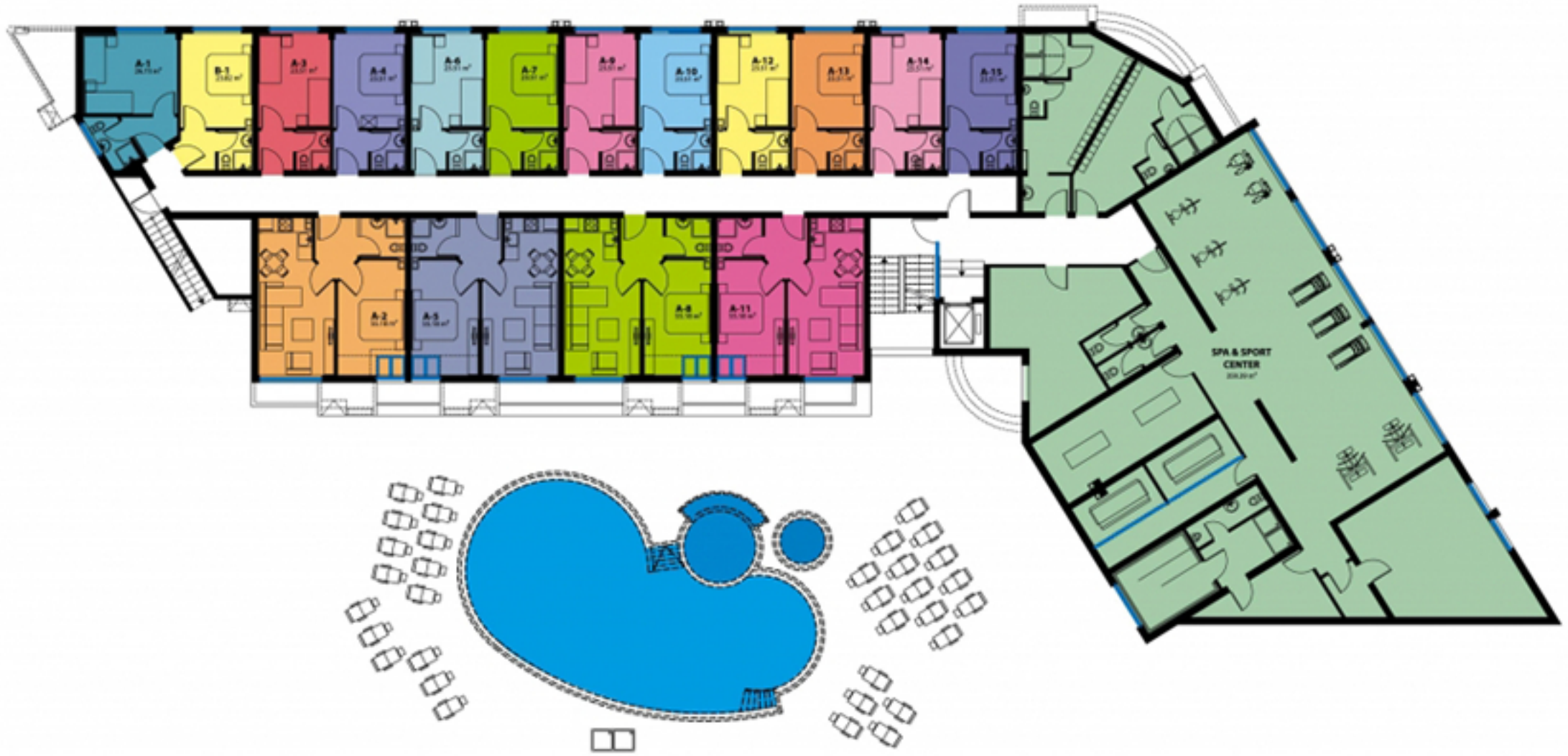


UNDERGROUND FLOOR



	CLEAR PARTS	COMMON PARTS	TOTAL AREA
	M ²	M ²	M ²
A1	19.96	3.86	26.73
B1	19.83	3.90	23.82
A2	46.19	8.99	55.18
A3	19.68	3.83	23.51
A4	19.68	3.83	23.51
A5	44.96	8.75	53.71
A6	19.68	3.83	23.51
A7	19.68	3.83	23.51
A8	44.96	8.75	53.71

A9
A10
A11
A12
A13
A14
A15
SPA

	CLEAR PARTS	COMMON PARTS	TOTAL AREA
	M ²	M ²	M ²
A9	19.68	3.83	23.51
A10	19.68	3.83	23.51
A11	44.96	8.75	53.71
A12	19.68	3.83	23.51
A13	19.68	3.83	23.51
A14	19.68	3.83	23.51
A15	19.68	3.83	23.51
SPA	339.57	19.82	359.39